

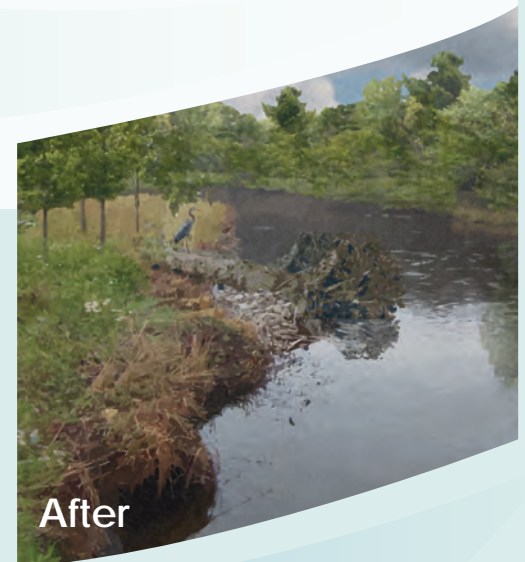
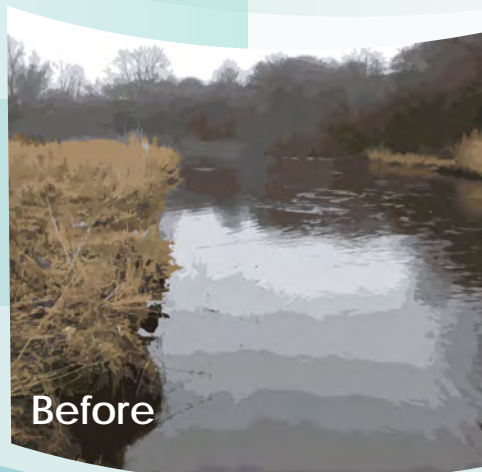
# Restoring the River Leven Large Wood

The restoration proposals for the **River Leven** include design features involving the placement of large pieces of **natural wood** consisting of a tree trunk and its root plate within the river.

These features often occur naturally and help shape the **flow and nature** of the river. They help create pools of deeper slower water which **provide habitat** and nursery areas for fish and invertebrates.

Being a natural material, wood is not only sustainable with a **minimal carbon footprint** but also provides important ecological benefits such as cover for fish, invertebrates and birds.

The use of **large pieces of wood** in river restoration is a tried and tested approach and there are numerous examples where its use has resulted in significant improvements to the river and the quality of the habitats it supports.



[www.theleven.org](http://www.theleven.org)

The Leven Programme | Facebook

General Enquiries: [riverleven.restoration@fife.gov.uk](mailto:riverleven.restoration@fife.gov.uk)

